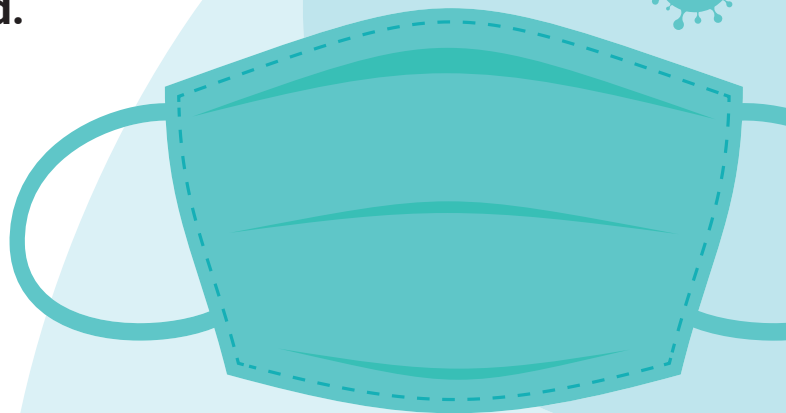


# Wearing Face Coverings Protects Others

**Q:** I'm a resident or visitor to Orange County.  
Where do I have to wear a face covering?

**A:** Anywhere you come within 6 feet of others  
who do not live in your household.  
That includes:

- Waiting in line to go inside a store
- Shopping in a store
- Picking up food at a restaurant
- Waiting for or riding on public transportation
- Riding in a taxi or other ride service vehicle
- Seeking health care
- Going into facilities that are allowed to stay open
- While at work
- When at the beach or an outdoor museum



Learn more at [ochealthinfo.com/novelcoronavirus](https://ochealthinfo.com/novelcoronavirus)